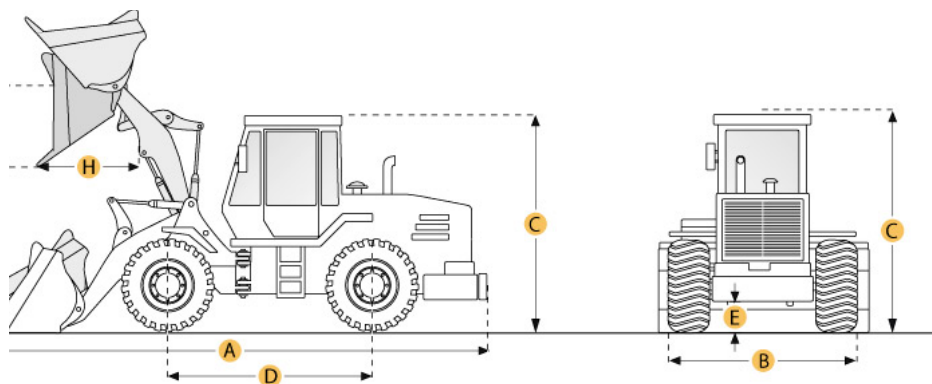
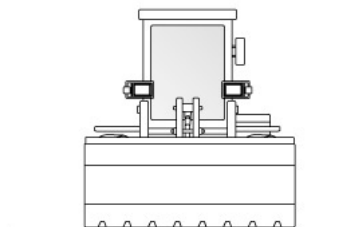


840 X 1981



RAISE	9.5 ft in	2889 mm
GROUND	25.3 ft in	7710 mm
	8.4 ft in	2562 mm
	11.2 ft in	3404 mm
	10.7 ft in	3253 mm
	1.2 ft in	365 mm
	13.1 ft in	3979 mm
DUMP	3.8 ft in	1172 mm



y IV 667TA/EED, Tier III Certified	
p	128 kw
p	136 kw
rpm	
u in	6.7 L
rpm	
o ft	809 Nm

%
 ocharged with Aftercooler

4 lb	13900 kg
l	246 L
l	193.1 L
al	14.2 L
al	36.9 L
al	25.6 L
	30.3 L
al	27.4 L
5 lb	12526 kg
ft in	5750 mm

tps
 :grees
 R25

! Proportional w/Electronic Control Module torque
 ng autoshift/manual shift and modulation

mph	38 km/h
h	25.7 km/h
d centered pressure/flow compensated	
psi	24821 kPa
gal/min	119.6 L/min
cc	
cc	
cc	
5 lb	0 kN
.in	2889 mm
.in	2700 mm
d3	2.7 m ³
3	2.3 m ³
ft in	7710 mm
.in	2562 mm
ft in	3404 mm
.in	365 mm
ft in	3253 mm
ft in	3979 mm
.in	1172 mm

Cancel

Capture

OEM specifications are provided for base units. Actual equipment might vary with options.