

## Technical Data



### Engine TL 855 / TSL 855

Make: DEUTZ  
 Type: TD2011L04i  
 Power: 52 kW (70 hp) at 2300 rpm.  
 Cylinders / stroke volume: 4 in line / 3108 ltr.  
 Cooling system: oil / air

Exhaust gas values acc. to 97/68/EC; stage IIIa.  
 Dry-element type air filter with safety cartridge and pollution indicator.



### Drive Unit

Power-controlled, hydrostatic drive unit with power limit control, i.e. automatic adaptation of traction power and speed; creep speed gearshift via rotary potentiometer steadily adjustable from 0-20 km/h. Via an inching / brake pedal, driving speed can be reduced at full engine speed providing at the same time more power to the working hydraulics. Operating ranges are shiftable under load.

Front axle: planetary rigid axle with multiple-disc self-locking differential, rigidly mounted  
 Rear axle: planetary rigid axle with reduction gear, oscillating suspension, with multiple-disc self-locking differential and multiple-disc brake, rear axle oscillation  $\pm 12^\circ$   
 Working operation: 0-7 km/h  
 max. traction / limited speed  
 Road operation: 0-20 km/h  
 max. traction / limited speed



### Brakes

**Service Brake**  
 Hydraulic foot-operated brake actuating two oil-immersed multiple-disc brakes which are effective on all 4 wheels via the all-wheel drive. Hydrostatic drive unit acting as wear-resistant auxiliary service brake.

**Parking Brake**  
 Mechanical operation of the multiple-disc brake.



### Tires

Front and rear: 405/70 R 20 MPT 01  
 Option: 405/70 R 20 EM 01  
 Other special tires on request.



### Steering

Articulated steering, fully hydraulic via priority valve, quick and easy steering event at idling speed. Total angle 80°. Emergency steering features are available when engine is not running.



### Loading System

Hydraulic quick-change device fitted as standard. Sealed bearings with extended lubrication intervals. Telescopic loading system with parallel kinematics. Swivelling device\* 180° (2 x 90°) continuously variable.



### Filling Capacities

Diesel fuel: 80 ltr.  
 Hydraulic system: 65 ltr.



### Noise Emission Level

Guaranteed noise level: acc. to directive 2000/14/EC



### Hydraulic System

Working / steering hydraulics, pump discharge: max. 76 ltr./min.  
 Working pressure, loading / steering hydraulics: 200 bar / 180 bar.  
 Double-acting lifting, tipping and swivel\*-telescopic cylinders.  
 Control unit with electro-hydraulic servo control, proportionally load-independent.  
 Control block with 4/5\* operating circuits.  
 Single-lever cross-type control for lifting, tipping and swivel\*-telescopic cylinders and additional control circuit for quick-change device and attachments.



### Dimensions and Weights

TSL 855: acc. to drawing  
 Operating weight: 6900 kg  
 TSL 855: acc. to drawing  
 Operating weight: 6200 kg



### Electrical Equipment

Electric generator, three-phase current: 14 V / 60 A  
 Starter: 2.2 kW / 12 V  
 Battery: 12 V / 88 Ah  
 Battery voltage: 12 V  
 Lighting equipped with halogen lights acc. to StVZO (German Road Traffic Licensing Regulations).



### Cabin

Large, elastically supported cabin (ROPS-FOPS) providing panorama view, with plane entrance on both sides; parallel windshield wiper in front and rear with "parking position" and windshield washer, interval mechanism for wiper in front; tinted safety glazing, rounded panorama front and rear window, sliding window on the right; orthopaedic, fully adjustable comfortable seat with disc support, safety belt; steering wheel and instruments console adjustable in height and inclination; adjustable engine oil heating with defroster nozzles, for front and rear window, 3-stage blower for fresh air and air circulation; service hour meter, fuel indicator and all other necessary operating, controlling and indicating instruments clearly arranged on the instrument panel; 12 V plug socket; direction indicator switch, switch for additional control circuit, pushbutton for extending and retracting; pushbutton for parallel guidance cylinders integrated in the joystick, swivelling device 180° sensitively controlled via joystick; joystick moving together with the seat; 1-key system, interior lamp, sun shield, inside mirror, battery main switch; fold-away outside mirrors on both sides, 2 working floodlights in front of the cabin.



### Special Equipment

Options:  
 0-25 km/h highspeed version  
 0-35 km/h highspeed version incl. 75 kW-engine (102hp)  
 Heated outside mirrors electrically adjustable.  
 Working floodlight in the back of the cabin.  
 Rotating flashing beacon; acoustic reversing alarm;  
 radio, air conditioning, anti-theft device,  
 air-suspended comfortable driver's seat;  
 central lubrication system, pre-filter for coarse-grained dust, safety device against pipe breakage; depressurized return line in front, additional control circuit for attachments; shock absorption system for loading system;  
 first filling with biological oil, protective paint against aggressive agents;  
 soot filter system, catalyzer, spare wheel; universal shovel, lifting fork, load hook, power sweeper, snowplow, etc.

Other options available upon request.

\*TSL 855 only

## Powerful – flexible fields of application



TSL 855



TL 855

**PAUS**  
*...the people who care!*

Hermann Paus Maschinenfabrik GmbH  
 Siemensstraße 1-9 · 48488 Emsbüren, Germany  
 P.O. Box 1161  
 Phone: 0049 (0) 59 03 7 07-0  
 Fax: 0049 (0) 59 03 7 07-33  
 info@paus.de  
 www.paus.de

Your distributor:

538588/14

**PAUS**

*...the people who care*

construction machines

*Multifunctional  
 and efficient!*



Telescopic Loader  
 Telescopic Swivel Loader

TL 855 + TSL 855



Excellent payload, great range of action and enormous stability even in case of heavy operation



Various attachments make the TL 855 and the TSL 855 an universal machine



■ hydrostatic drive unit

■ comfortable cabin

■ two variants

Extremely good accessibility for inspection and maintenance work due to the GFK engine cover that can be opened widely



TSL 855: swivel instead of steer

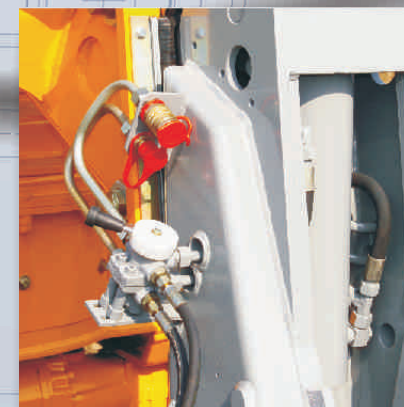
Plane entrance on both sides, control device foldable to the back, ergonomically designed joystick, orthopaedic comfortable seat with safety belt and disc support



Electro-hydraulic servo control via multifunctional joystick. On TSL 855: swivel function by turning the joystick.



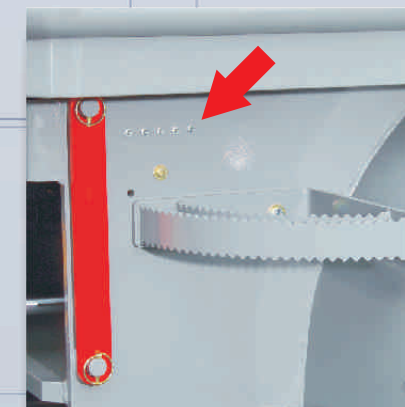
Comfortable cabin with fully adjustable steering column and very good panorama view



Additional connection for hydraulic attachments, e.g. concrete-mixing bucket or power sweeper



PAUS standard: hydraulic quick-change device for many attachments



The central bar near the steps permits easy lubrication of the entire rear end of vehicle

## PAUS - TL 855 / TSL 855

Telescopic Loaders that will convince you! Safe and easy operation combined with optimum height this is what you get with the Telescopic Loaders TL 855 + TSL 855. In 1996, PAUS manufactured the first Telescopic Swivel Loader worldwide. This experience combined with the latest technical know-how can be found in an efficient and excellently developed machine that will convince you in operation.

Distinguishing marks of PAUS Telescopic Loaders:

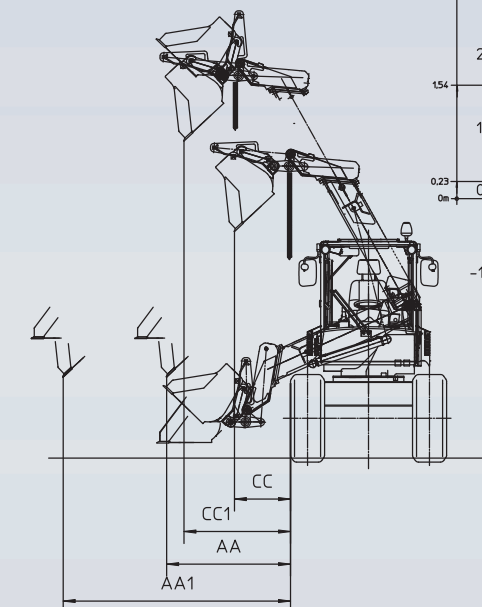
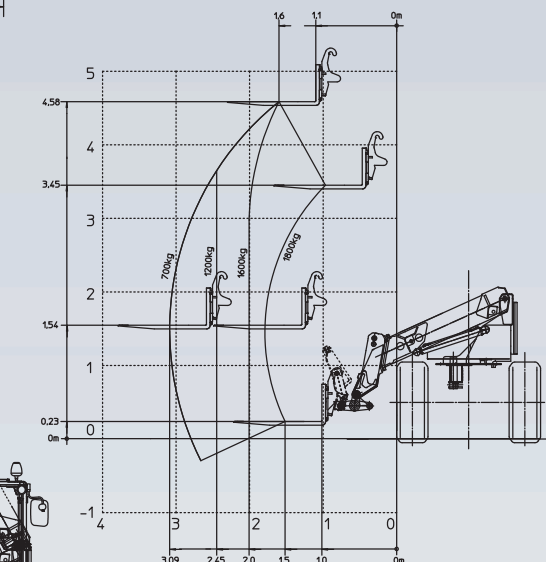
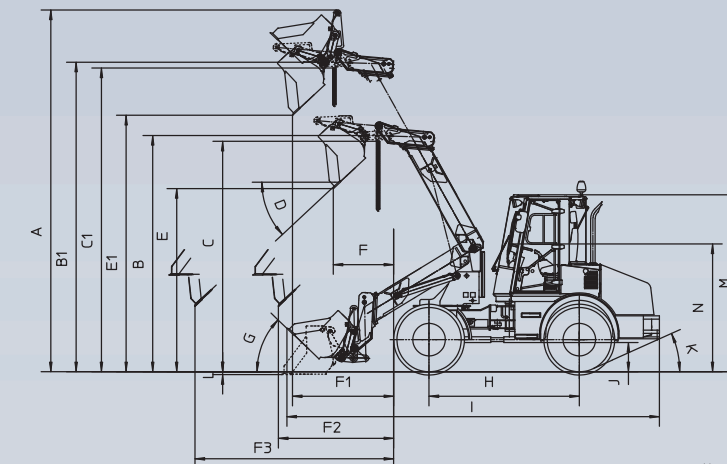
- Fully developed technology meets all valid regulations as to noise protection and safety.
- With PAUS Telescopic Loaders TL 855 and Telescopic Swivel Loaders TSL 855 you are in the position to carry out many works more efficiently than with usual wheel loaders. By means of the loading system swivelling by 180° you achieve unmatched efficiency. Due to the articulated steering and the swivelling device, the bucket's total range of action is about 260°.
- Warning device against overload and the automatic lock\* of the oscillating axle provide optimum stability.
- The strong parallel kinematics offers great advantages especially when working with a lifting fork or working basket.
- The series -55, PAUS provides modern design combined with outstanding technology. The cabin offers an excellent panorama view. Large windows grant optimum view on bucket, wheels and attachments. The window in the cabin's roof allows a good view on the load in extended / lifted position. All that has a positive effect on the safety aspect.
- PAUS offers excellent climate control in the cabin, heating of the foot compartment, defroster nozzles for front and rear windows via 3-stage blower.

\* TSL 855 only

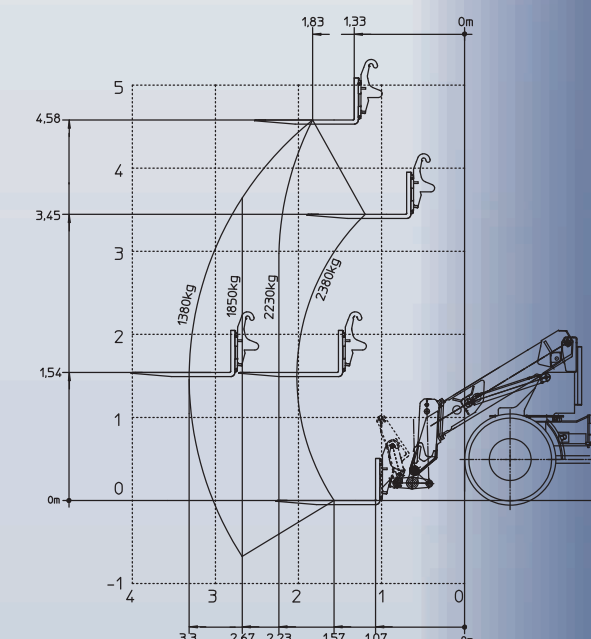
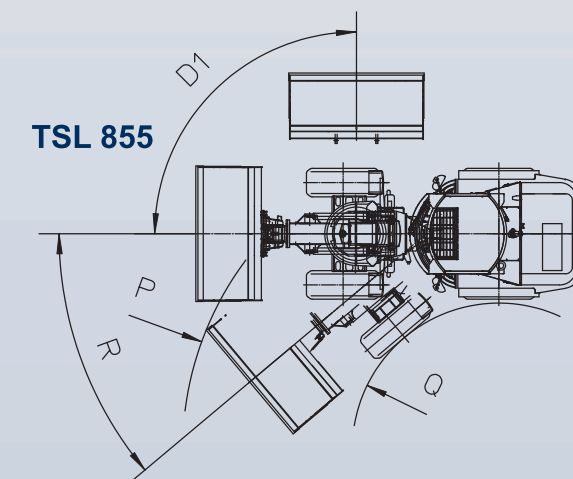
### TL 855 / TSL 855

A machine for all applications in road construction, civil engineering, cable laying work, landscaping, agricultural and municipal work.

Whenever great lifting height, dumping height and range of action is demanded, the PAUS Telescopic Loader is the first choice!



TSL 855



RL	TL855	TSL855
A	5612	5606
B	3666	3661
B1	4802	4797
C1	4712	4707
D	43°	43°
D1		90°
E	2843	2838
E1	3980	3974
F	877	935
F1	1510	1568
F2	1728	1786
F3	3024	3079
G	44°	44°
H	2330	2330
I	5720	5775
J	445	445
K	24°	24°
L	40	44
M	2742	2742
N	1980	1980
O		
P	R4710	R4730
Q	R2190	R2190
R	40°	40°
AA		1553
AA1		2850
BB		
CC		703
CC1		1335

Operating data	TSL 855	TL 855
Bucket capacity	1,0 m <sup>3</sup>	1,0 m <sup>3</sup>
Width of bucket	2000 mm	2000 mm
Width of loader	1900 mm	1900 mm
Tipping load, articulated	3800 Kg	3800 Kg
Turning radius inside/outside above bucket	2190mm/ 4730mm	2190mm/ 4710mm
Data with lifting fork	payload acc. to EN 474-3	
Payload 80 % , transport position / articulated	2380/ 2210 Kg	2380/ 2210 Kg
Payload 60 % transport position / articulated	2100/ 1950 Kg	2100/ 1950 Kg
Operating weight	6900 Kg	6200 Kg

All information without engagement. Machines comply with the latest European safety directives. We reserve the right to perform design changes without prior notice.

