

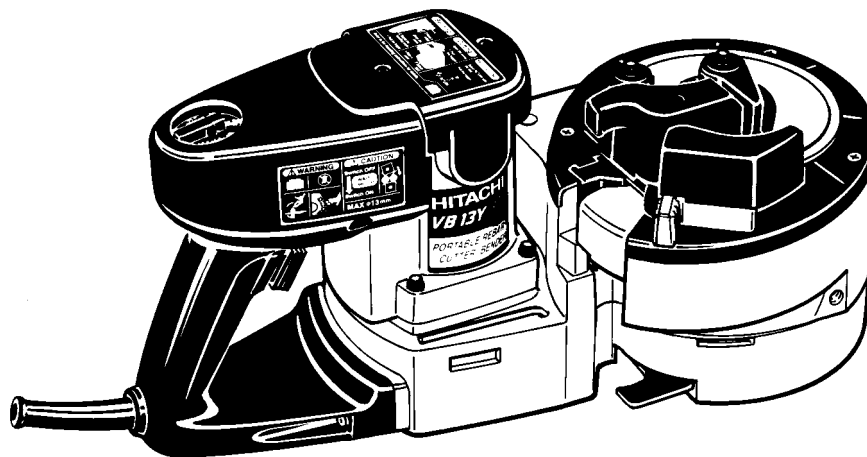
MODEL

VB 13Y

HITACHI
POWER TOOLS

PORTABLE REBAR CUTTER/BENDER
VB 13Y

TECHNICAL DATA
AND
SERVICE MANUAL

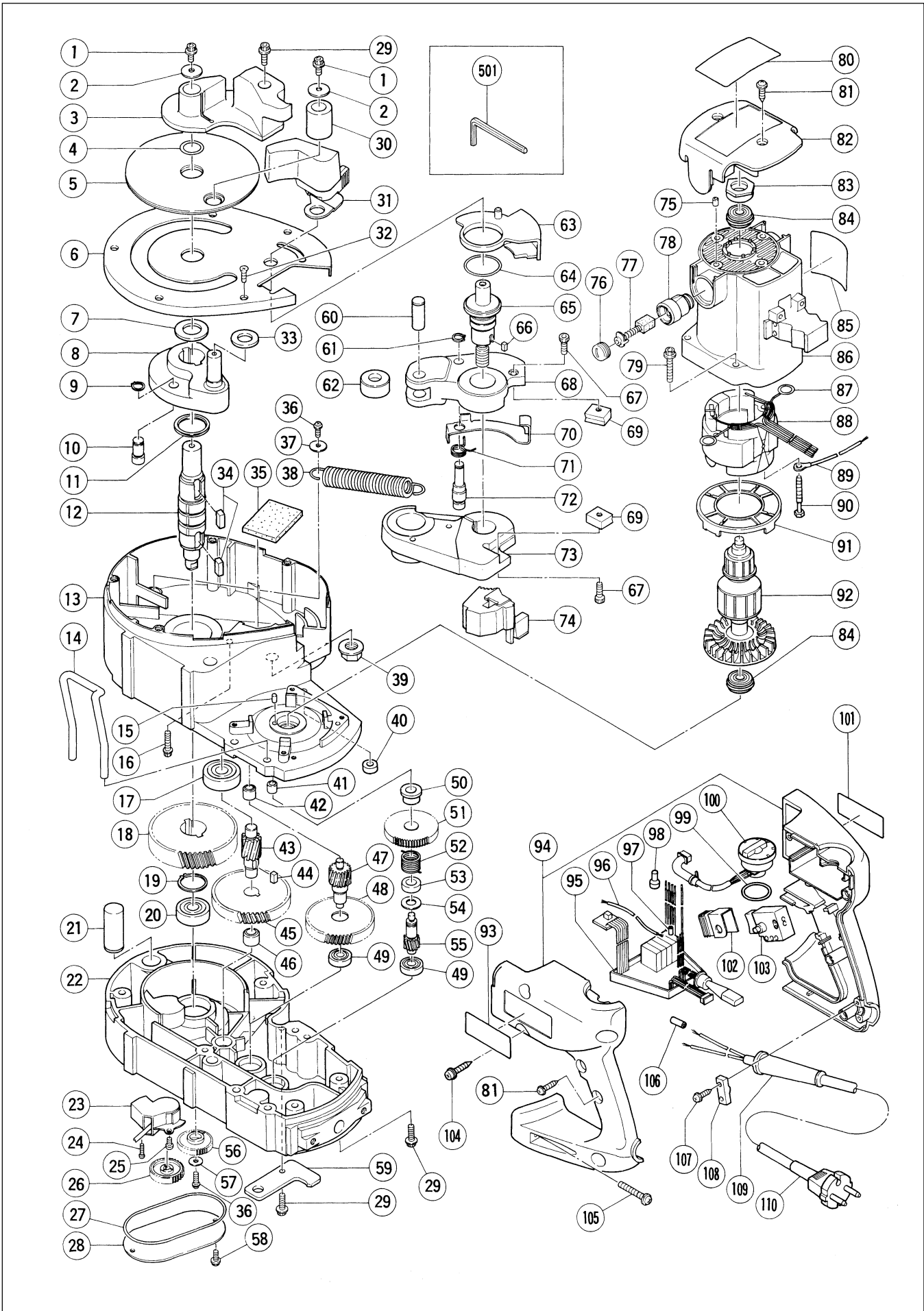


LIST No. 0782

Jan. 2000

V

Assembly Diagram for VB 13Y



PARTS

VB 13Y

ITEM NO.	CODE NO.	DESCRIPTION	NO. USED	REMARKS
1	998-471	HEX. SOCKET HD. BOLT M5X12	2	
2	316-224	WASHER	2	
3	318-288	CENTER PLATE (A)	1	
4	873-570	O-RING (P-18)	1	
5	316-220	TURN TABLE	1	
6	316-219	CAM COVER	1	
7	316-216	FELT PACKING	1	
8	316-199	CAM	1	
9	939-540	RETAINING RING FOR D10 SHAFT (10 PCS.)	1	
10	316-201	LOCK PIN (B)	1	
11	316-198	V-RING	1	
12	316-200	CAM SHAFT	1	
13	316-184	INNER COVER ASS'Y	1	INCLUD.17,35,41,42
14	316-225	STAND	1	
15	931-701	BEARING LOCK	1	
16	316-195	HEX. SOCKET HD. BOLT (W/FLANGE) M5X20	2	
17	630-1VV	BALL BEARING 6301VVCMP2L	1	
18	316-202	FINAL GEAR	1	
19	965-469	RETAINING RING FOR D25 SHAFT	1	
20	620-1VV	BALL BEARING 6201VVCMP2L	1	
21	316-451	PIN D18	1	
22	316-211	GEAR COVER ASS'Y	1	INCLUD.20,21,46,49
23	318-284	SENSOR HOLDER ASS'Y	1	INCLUD.24,56
24	316-214	TAPPING SCREW D3X12	1	
25	949-215	MACHINE SCREW M4X8 (10 PCS.)	2	
26	316-212	SENSOR GEAR	1	
27	985-227	O-RING (S-85)	1	
28	316-215	SENSOR COVER	1	
29	994-192	HEX. SOCKET HD. BOLT (W/FLANGE) M5X16	9	
30	316-223	ROLLER (B)	1	
31	318-287	LEVER (A)	1	
32	949-322	FLAT HD. SCREW M4X10 (10 PCS.)	5	
33	316-217	FELT PACKING	1	
34	306-506	FEATHER KEY 7X7X15	4	
35	316-186	SUPPORT (B)	1	
36	987-203	SEAL LOCK SCREW (W/SP. WASHER) M4X12	2	
37	875-249	THRUST WASHER	1	
38	316-197	RETURN SPRING	1	
39	316-196	FLANGE NUT M12	1	
40	307-607	WRENCH HOLDER	1	
41	316-185	METAL	1	
42	954-940	METAL D8X10	1	
43	316-203	THIRD PINION	1	
44	948-015	FEATHER KEY 5X5X10	1	
45	316-204	THIRD GEAR	1	
46	954-789	METAL (B)	1	
47	316-205	SECOND PINION	1	
48	316-206	SECOND GEAR	1	
49	608-VVM	BALL BEARING 608VVC2PS2L	2	
50	318-360	SLEEVE (B)	1	
51	318-358	FIRST GEAR (B)	1	

* : ALTERNATIVE PARTS

9 - 99

PARTS

VB 13Y

ITEM NO.	CODE NO.	DESCRIPTION	NO. USED	REMARKS
52	316-209	CLUTCH SPRING	1	
53	316-208	COLLAR (A)	1	
54	981-077	WASHER	1	
55	318-359	FIRST PINION (B)	1	
56	316-212	SENSOR GEAR	1	
57	962-569	WASHER (B)	1	
58	316-228	HEX. SOCKET HD. BOLT (W/FLANGE) M4X10	2	
59	316-226	STEEL BAR GUIDE	1	
60	316-190	NEEDLE	1	
61	992-805	RETAINING RING FOR D9 SHAFT	1	
62	316-189	ROLLER (C)	1	
63	318-285	COVER	1	
64	980-879	O-RING (S-34)	1	
65	316-194	BOLT (A)	1	
66	980-809	FEATHER KEY 4X4X8	1	
67	949-821	HEX. SOCKET HD. BOLT M5X16 (10 PCS.)	2	
68	316-188	BRACKET (A)	1	
69	316-235	CUTTER (1 PAIR)	2	
70	316-191	CUTTER GUARD	1	
71	316-192	SPRING (C)	1	
72	316-193	PIN FOR SPRING	1	
73	316-187	BRACKET (B)	1	
74	316-222	DUST GUARD	1	
75	938-477	HEX. SOCKET SET SCREW M5X8	2	
76	935-829	BRUSH CAP	2	
77	999-043	CARBON BRUSH (1 PAIR)	2	
78	971-001	BRUSH HOLDER	2	
79	313-585	HEX. SOCKET HD. BOLT (W/FLANGE) M5X30	4	
80	318-286	CAUTION PLATE (E)	1	
81	301-653	TAPPING SCREW (W/FLANGE) D4X20 (BLACK)	6	
82	316-227	TAIL COVER	1	
83	310-111	BEARING BUSHING (B)	1	
84	318-362	BALL BEARING (A)	2	
85		HITACHI LABEL	1	
86	310-146	HOUSING ASS'Y	1	INCLUD.75,78
87	930-703	BRUSH TERMINAL	2	
88	340-419E	STATOR ASS'Y 230V	1	INCLUD.87
89	990-861	INTERNAL WIRE	1	
90	980-864	HEX. HD. TAPPING SCREW D5X40	2	
91	980-931	FAN GUIDE	1	
92	360-470E	ARMATURE 230V	1	
93		NAME PLATE	1	
94	316-234	HANDLE (A).(B) SET	1	
95	318-282	CONTROLLER CIRCUIT	1	
96	318-283	INTERNAL WIRE	1	
97	981-373	TUBE (D)	1	
98	959-140	CONNECTOR 50091 (10 PCS.)	7	
99	878-609	O-RING (S-24)	1	
100	318-281	VOLUME HOLDER ASS'Y	1	INCLUD.99
101	318-289	CAUTION PLATE (D)	1	

PARTS

ITEM NO.	CODE NO.	DESCRIPTION	NO. USED	REMARKS	
102	995-362	SWITCH RUBBER COVER	1		
103	318-280	SWITCH (2P PLUG IN TYPE) W/O LOCK	1		
104	302-089	TAPPING SCREW (W/FLANGE) D5X20 (BLACK)	2		
105	316-229	MACHINE SCREW (W/WASHERS) M5X20 (BLACK)	2		
106	981-373	TUBE (D)	1	FOR CORD	
107	984-750	TAPPING SCREW (W/FLANGE) D4X16	2		
108	937-631	CORD CLIP	1		
* 109	938-051	CORD ARMOR D10.1	1		
* 109	953-327	CORD ARMOR D8.8	1		
* 110	500-247Z	CORD	1	(CORD ARMOR D8.8)	
* 110	500-450Z	CORD	1	(CORD ARMOR D10.1) FOR GBR	
* 110	500-248Z	CORD	1	(CORD ARMOR D10.1) FOR SUI	

STANDARD ACCESSORIES

ITEM NO.	CODE NO.	DESCRIPTION	NO. USED	REMARKS	
501	944-458	HEX. BAR WRENCH 4MM	1		

* : ALTERNATIVE PARTS